

Research paper

Ethnobotanical survey of plants traditionally used against hematophagous invertebrates by ethnic groups in the mountainous area of Xishuangbanna, Southwest China

Yi Gou^a, Zhennan Li^{a, b}, Ruyan Fan^a, Zuchuan Qiu^{a, b}, Lu Wang^{a, b}, Chen Wang^a, Yuhua Wang^{a, *}

^a Department of Economic Plants and Biotechnology, Yunnan Key Laboratory for Wild Plant Resources, Kunming Institute of Botany, Chinese Academy of Sciences, Kunming, 650201, China

^b University of Chinese Academy of Sciences, Beijing, 100049, China

ARTICLE INFO

Article history:

Received 2 May 2020

Received in revised form

21 July 2020

Accepted 22 July 2020

Available online xxx

Keywords:

Ethnobotanical survey

Insecticide

Repellent

Traditional knowledge

ABSTRACT

Hematophagous invertebrates such as mosquitoes, leeches, mites, ticks, lice and bugs cause various problems for humans. Considering reports on insecticide resistance and requirements for improved environmental and toxicological profiles, there is a continuing need to discover and develop new insecticides and repellents. Ethnobotanical surveys of traditional plant-based repellents provide a direct method of identifying plants for potential use. During five field surveys in Bulang, Jinuo and Lahu villages between August 2018 and July 2019, semi-structured interviews were conducted with 237 informants (151 male, 86 female; mean age 63). Frequency of citation, use value, informant consensus factor and Jaccard index were employed to statistically analyze the collected data. A total of 709 use reports relating to 32 plant species and 71 remedies were collected. Similarities and differences between the three groups, as well as the Dai and Hani of Xishuangbanna, who were studied earlier, were shown through network analysis. These five ethnic groups living in the same area have a common understanding of traditional botanical knowledge against hematophagous invertebrates, but each group also possesses unique knowledge. Recording and protecting this traditional knowledge is potentially useful for protecting this cultural diversity and related biodiversity and can also have important practical applications. In this study, traditional knowledge provided us with many new potential plants for follow-up research for the development of new insecticides and repellents, among which *Artemisia indica*, *Nicotiana tabacum* and *Clausena excavata* are the most promising.

Copyright © 2020 Kunming Institute of Botany, Chinese Academy of Sciences. Publishing services by Elsevier B.V. on behalf of KeAi Communications Co., Ltd. This is an open access article under the CC BY-NC-ND license (<http://creativecommons.org/licenses/by-nc-nd/4.0/>).

1. Introduction

Hematophagous invertebrates such as mosquitoes, leeches, mites, ticks, lice and bugs cause various problems for humans. They bite people and may cause blisters, necrosis or allergic reactions when they sting (Lavaud et al., 1999). Hematophagous parasites are also a common problem for livestock and are responsible for severe economic losses (Booppha et al., 2010; Campbell and Thomas, 1999). In addition, hematophagous invertebrates are capable of transmitting infectious pathogens between humans and leading to the spread of vector-borne diseases. Every year, globally, there are more than 700,000 deaths from vector-borne diseases, including malaria, dengue fever, Zika fever, yellow fever, chikungunya fever, Chagas disease and Japanese encephalitis (WHO, 2020). Apart from the potential deaths, these diseases can also cause substantial harm and hardship to humans, as many people who survive these

Abbreviations: DEET, *N, N*-diethyl-3-methylbenzamide; FC, frequency of citation, the number of informants who mention each usage of the plant; UR, use report, each plant species mentioned by an interviewee within one use-category (defined according to the invertebrate group target) was counted as a “use report”; UV, use value, a quantitative index calculated to demonstrate the relative importance of species in control hematophagous invertebrates; ICF, informant consensus factor, a quantitative index calculated to measure the agreement between informants about uses of plants for each category; JI, Jaccard index, the similarity of plants used by different ethnic groups.

* Corresponding author.

E-mail addresses: gouyi@mail.kib.ac.cn (Y. Gou), lizhennan@mail.kib.ac.cn (Z. Li), fanruyan@mail.kib.ac.cn (R. Fan), qiuzuchuan@mail.kib.ac.cn (Z. Qiu), wanglu@mail.kib.ac.cn (L. Wang), wangchen@mail.kib.ac.cn (C. Wang), wangyuhua@mail.kib.ac.cn (Y. Wang).

Peer review under responsibility of Editorial Office of Plant Diversity.

<https://doi.org/10.1016/j.pld.2020.07.009>

2468-2659/Copyright © 2020 Kunming Institute of Botany, Chinese Academy of Sciences. Publishing services by Elsevier B.V. on behalf of KeAi Communications Co., Ltd. This is an open access article under the CC BY-NC-ND license (<http://creativecommons.org/licenses/by-nc-nd/4.0/>).

Please cite this article as: Gou, Y et al., Ethnobotanical survey of plants traditionally used against hematophagous invertebrates by ethnic groups in the mountainous area of Xishuangbanna, Southwest China, Plant Diversity, <https://doi.org/10.1016/j.pld.2020.07.009>

infections are left permanently debilitated, disfigured, injured or blind (Chu et al., 2010; Pialoux et al., 2007). The economic burden of vector-borne diseases to both governments and households is significant and has been associated with relatively lower economic development (WHO, 2017).

Humans have used various methods to fight against hematophagous invertebrates. Traditionally, local plants have been used to protect people from stings. For instance, oils have been extracted from plant materials and applied to the body (Roberto et al., 2001). Burning plant materials, including wood and leaves, is also a common method to repel insects (Bockarie et al., 1994; Yang et al., 2006). In addition, toxic solutions are made by adding specific plant materials to water (De Boer et al., 2010). Since the 1940s, synthetic insecticides and repellents have been discovered and widely used. These chemicals have replaced traditional methods in most regions. Two core interventions that prevent and control vector-borne diseases are insecticide-treated nets and indoor residual spraying of insecticides (WHO, 2017). However, after decades of use, more than 550 pest insect species have developed resistance to one or more existing insecticides (Whalon et al., 2008). For example, mosquitoes have developed tolerance to DEET (N, N-diethyl-3-methylbenzamide) (10%) (Brown and Hebert, 1997), a repellent that prevents insect bites for up to 9 h (Tawatsin et al., 2006). In addition, environmental considerations require the continued discovery and development of new insecticides and repellents.

Today, traditional plant-based insect repellents cannot be feasibly used in an urban setting, but they can be used as sources of modern insecticides and repellents. Over several generations, researchers have screened plants that may act as natural repellents and characterized their activities and toxicities. Good examples of effective modern products developed from traditional plants include pyrethrum and neem (Debboun et al., 2006). A small number of people in remote rural areas currently use traditional methods to control mosquitoes and other hematophagous invertebrates due to their low cost (Gakuya et al., 2013; Kweka et al., 2008). At the same time, due to improvements in living standards and the underestimation of the value of this kind of knowledge, traditional knowledge of insect control is rapidly being lost (González et al., 2011).

Three main ethnic groups—the Bulang, Jinuo and Lahu—have been living in the mountainous area of Xishuangbanna for several centuries. Before the 1950s, these ethnic minority communities all lived in the mountainous areas of Xishuangbanna, mainly engaged in swidden agriculture. Because this type of farming is not highly productive, hunting and gathering have also been traditionally important activities for these communities. Through long-term forest life, these communities have gradually accumulated plant utilization knowledge with characteristics specific to their own cultures. Since 1956, with the help of the government, these ethnic groups have improved their living standards, transitioning directly from a primitive society to socialism, and from migratory to sedentary farming.

The aims of this study were as follows: i) to document the traditional insect repellent knowledge of the Bulang, Jinuo and Lahu people in Xishuangbanna; ii) to compare the data collected from these three ethnic groups, as well as ethnobotanical studies of the Dai and Hani people with whom our research group has carried out the same research; and iii) to discuss the potential use of these plants on the basis of ethnobotanical data.

2. Methods

2.1. Study area

Xishuangbanna Dai Autonomous Prefecture is located in southern Yunnan Province, China, bordering Laos and Myanmar in

the south and east. This region has a land area of 19,125 km², with mountainous topography (elevation ranges from 491 m to 2430 m). This area is situated in the tropical monsoon forest zone of Southeast Asia, with a rainy season between May and October and a dry season lasting from November to April (Office of the Government of Xishuangbanna Dai Autonomous Prefecture, 2019). The climate in Xishuangbanna is warm and humid throughout the year, in 2016 the mean monthly temperatures ranged from 14.9 °C to 25.8 °C, according to the meteorological station in Mengla (Station ID: 56969). Rainfall during the wet season accounts for over 80% of the total annual precipitation, while the dry season has a frequent occurrence of heavy fog (Zhao et al., 2013; Zhang et al., 2018). The primary forest vegetation in Xishuangbanna includes seven main types of vegetation: tropical rainforest, tropical seasonal moist forest, tropical monsoon forest, tropical lower montane evergreen broad-leaved forest, tropical palm forest, tropical coniferous forest, and bamboo forest (Zhu et al., 2015). Included as part of the Indo-Burma biodiversity hotspot, Xishuangbanna has a rich diversity of flora and fauna, including 762 species of vertebrates, more than 3000 species of invertebrates and about 4150 species of seed plants (Luo et al., 2016; Myers et al., 2000; Office of the Government of Xishuangbanna Dai Autonomous Prefecture, 2019; Zhu, 2013).

For generations 13 ethnic groups have lived in Xishuangbanna. The Dai people have the largest population, accounting for approximately 33.6% of the population of the whole prefecture. Before liberation, the Dai people ruled other peoples under a feudal system and occupied most basins and valleys of the whole state. The Hani people are the second most populous minority (20.2%), living in the mountainous and semi-mountainous area of the whole state. Bulang (4.98%), Lahu (6.04%) and Jinuo (2.74%) people formerly lived in the hills, but now have partly moved to relatively flatter areas at lower elevations after the establishment of protected areas. In areas above 1000 m, the main cash crops are tea and sugarcane, while those below 1000 m are rubber, rice, and bananas. Based on our previous experiences studying Dai and Hani villages, there are only a small number of people who still retain knowledge of traditional plant-based remedies, most of whom are herbalists. Therefore, we selected 36 villages with herbalists or people who had rich knowledge of medicinal plants in Bulang, Jinuo and Lahu as study sites (as shown in Fig. 1).

2.2. Data collection

Ethnobotanical data were collected during five field surveys in Bulang, Jinuo and Lahu villages from August 2018 to July 2019. Meetings with village administrators were first conducted to inform them of the purpose of our work. The village head needed to consent to the research and recommended interviewees such as traditional healers, herbalists and villagers who had sound knowledge of useful plants. We were accompanied by local people as native guides and translators for all our visits. As shown in Table 1, semi-structured interviews were conducted with a total of 237 informants (151 males and 86 females). The ages of the informants ranged from 27 to 98 years old, with an average of 63 years old. We interviewed 45 herbalists, 170 ordinary residents who depend on agriculture, and 12 people with other professions. Questions were asked to obtain detailed information on the plants they use to control hematophagous invertebrates, such as vernacular names, plant parts used, targeted invertebrates, method of preparation, and route of administration. Plants were collected and identified by herbalists with the assistance of researchers during transect walks. The plants were photographed, collected and later identified by researchers. Voucher specimens were deposited in the herbarium of the Kunming Institute of Botany (KUN), China. Plant

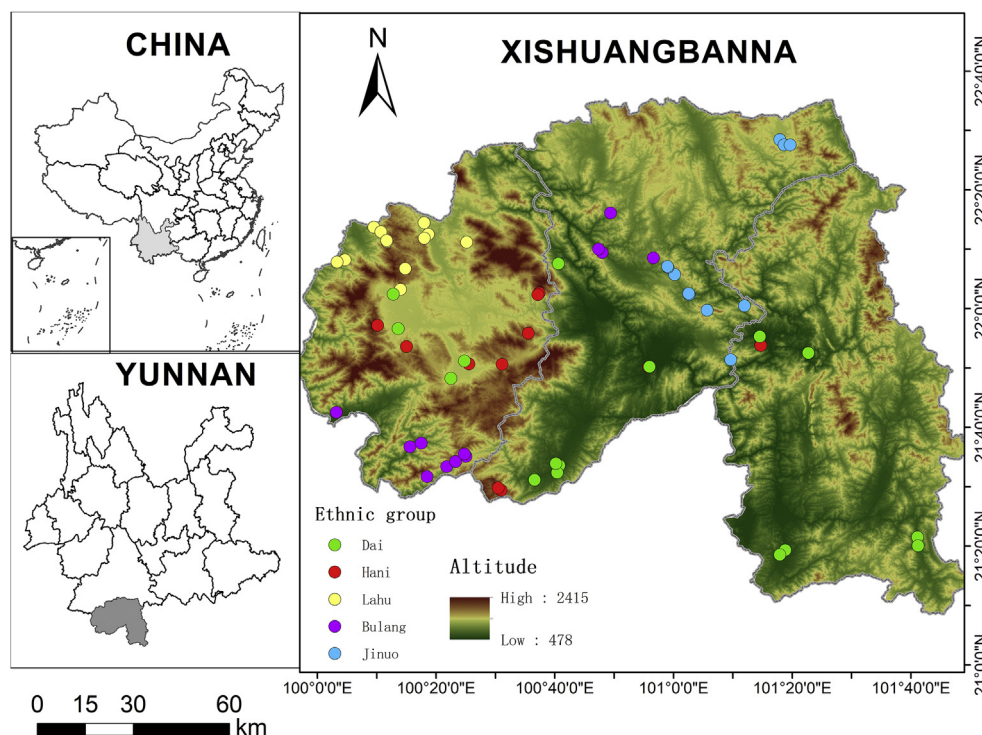


Fig. 1. Location of Xishuangbanna and sites of ethnobotanical surveys of plant-based remedies to control hematophagous invertebrates (including villages of Bulang, Jinuo, and Lahu and previous research sites of Dai and Hani villages).

Table 1

Gender, age, and occupation of the interviewees in the three ethnic groups.

	Bulang	Jinuo	Lahu
Gender			
Male	74 (65.5%)	42 (66.7%)	35 (57.4%)
Female	39 (34.5%)	21 (33.3%)	26 (42.6%)
Age			
<50	24 (21.2%)	10 (16.4%)	11 (18.0%)
50–59	21 (18.6%)	10 (16.4%)	11 (18.0%)
60–69	36 (31.8%)	14 (22.2%)	16 (26.2%)
70–79	26 (23.0%)	16 (25.4%)	16 (26.2%)
>79	5 (4.4%)	13 (20.6%)	7 (11.5%)
Occupation			
Herbalist	24 (21.2%)	5 (7.9%)	16 (26.2%)
Farmer	83 (73.5%)	55 (87.3%)	42 (68.9%)
Others	6 (5.3%)	3 (4.8%)	3 (4.9%)

names and families were defined according to the APG III classification system (APG, 2009).

2.3. Data analysis

To statistically analyze the data collected, four different quantitative indices were employed, viz., frequency of citation (FC), use value (UV), informant consensus factor (ICF) and Jaccard index (JI).

For each cited plant species, the number of informants who mentioned usage of the plant was counted as the frequency of citation (FC).

Each plant species mentioned by an interviewee within one use-category (defined according to the invertebrate group target) was counted as a “use report (UR)”. The use value (UV) was calculated to demonstrate the relative importance of species in controlling hematophagous invertebrates (Abe and Ohtani, 2013):

$$UV = \sum U_i / n$$

where U_i is the number of UR cited by each informant for a given species, and n refers to the total number of informants. UV is high when there are many use reports for a plant, implying that the plant is important, and low (approach to 0) when there are few reports related to its use.

Many plant species were used to control different hematophagous invertebrates, and these invertebrates were divided into different target categories. The informant consensus factor (ICF) was calculated to measure the agreement between informants about the uses of plants for each category (Heinrich et al., 1998). The ICF was calculated using the following formula:

$$ICF = \frac{N_{ur} - N_t}{N_{ur} - 1}$$

where N_{ur} refers to the number of use reports in each category and N_t refers to the number of taxa used for a particular category by all informants.

The Jaccard index (JI) was used to compare the similarity of plants used by different ethnic groups (Sivasankari et al., 2014). The JI was calculated using the following formula:

$$JI = \frac{c}{a + b - c} \times 100$$

where a is the number of species of ethnic group A, b is the number of species of ethnic group B, and c is the number of species common to both A and B.

NodeXL for Excel was used for network analysis. Ethnic groups and plant taxa were assembled and visualized as a set of nodes (also called vertices), which can be connected (or not) by lines (also

called edges), graphically describing interactions between humans and plants. Network analysis has been used for cross-cultural comparative studies of ethnobotany (Ong et al., 2020). In this study, we attempt to use it to address human-plant relations, especially in analyzing variation between different ethnic groups in the same area.

To analyze how traditional insect-repelling plant knowledge varied according to the characteristics of the different informants, we performed an analysis of variance (ANOVA), taking “UR” (number of use reports provided by each informant) as the variable to model and using SPSS 22. software. Similarly, as explanatory variables, we took the three items of personal data requested: “ethnic group”, “gender” and “occupation”. The Duncan analysis method was used for pairwise comparison. The Spearman rank correlation test was employed between the age of informants and UR.

3. Results

3.1. Diversity of traditional botanical remedies against hematophagous invertebrates

Through ethnobotanical surveys, we collected 709 use reports of 32 plant species (71 remedies) that are used by Bulang, Jinuo and Lahu people to prevent or repel hematophagous invertebrates, such as mosquitoes, leeches, chicken mites and lice (Table 2). The taxa of these plants are distributed across 19 families and 30 genera. Among 32 species, the three species with UV higher than 0.40 were *Artemisia austroyunnanensis* (0.81), *Artemisia indica* (0.81) and *Nicotiana tabacum* (0.42). This result indicates the importance of these species in controlling hematophagous invertebrates, regardless of their target categories. The most widely used families are Asteraceae (7 species), Lauraceae (3 species), Rutaceae (3 species), and Solanaceae (3 species). Most species (50%) are herbaceous plants, followed by trees, shrubs and liana (31%, 16% and 3%, respectively). Eight of these plants are cultivated or semi-cultivated: *Allium sativum*, *Artocarpus heterophyllus*, *Cestrum nocturnum*, *Cymbopogon citratus*, *N. tabacum*, *Prunus persica*, *Psidium guajava* and *Toona sinensis*. These plants are also used as condiments, fruits, and ornamental plants in the daily life of local people. Most of the other wild plants are easily accessible, except for some woody plants that are rare. Leaves are the most frequently sought plant parts, accounting for 60.6% of cited remedies. Other plant parts used include branches (17.1%), aerial parts (9.2%), barks (5.3%), fruits (3.9%), bulbs (2.6%) and flowers (1.3%).

Mosquitoes are the most important blood-sucking insects because they are ubiquitous in homes, fields and forests. Of the plants collected in this study, 26 species with 41 remedies are used for mosquitoes. The methods for controlling mosquitoes are diverse: direct burning is used for most plants (19 species), followed by smearing (9 species), applying to skin or wearing (8 species), and processing into incense (2 species). On summer evenings, when there are large numbers of mosquitoes, people throw large bundles of plant material into the fire to generate smoke. If there are fewer mosquitoes, then plants are only slightly heated on the fire, hung up, or placed indoors. When farming or traveling, people tie plants to their body or apply plant juice to their skin. In addition, dried bark of *Cinnamomum bejolghota* and *Cinnamomum iners* are ground down and processed to incense (Fig. 2). This incense is used in various ritual activities of the Lahu people and was also reported by some informants to be useful in reducing mosquito attacks. *C. nocturnum* is cultivated by some people as ornamental plants with the belief that its strong scent is able to repel mosquitoes. *A. austroyunnanensis* and *A. indica* are the most popular mosquito-repelling plants, with much higher use frequencies than other plants. Local people call these two plants the same

name, but they believe the effect of the plant with smaller leaves (*A. indica*) is better than that of the other (*A. austroyunnanensis*).

Plant-based methods for repelling other invertebrates are simpler. Chicken mites are surface parasites that mainly parasitize the feathers and skin of chickens and affect the growth and production of chickens. *Clausena excavata*, *A. austroyunnanensis*, *A. indica*, *P. persica* and 11 other plant species are placed in the chicken rings to repel chicken mites. The Xishuangbanna area is rich in vegetation and abundant in rain. There are land leeches in the fields and forests that cause problems for the local people and their cattle. The fresh leaves of 9 plant species are able to prevent land leech bites when crushed and applied to bare skin. Leaves of *N. tabacum* soaked in water can be wiped on cow skin with water to help control leeches. Before planting, fruits of *A. heterophyllus* are minced and thrown in the field, which can reduce leeches in rice fields. In the past, the living and sanitary conditions of the local villagers were terrible. They put *Boenninghausenia albiflora*, *C. excavata* or *Polygonum barbatum* under beds to reduce lice and other ectoparasitic insect attacks.

3.2. Comparative analysis of plant species reported by five ethnic groups

From 2016 to 2019, our research group conducted an ethnobotanical survey of traditional botanical remedies against hematophagous invertebrates in 64 villages of the Bulang, Jinuo, Lahu, Hani and Dai people in Xishuangbanna (see Fig. 1). Each village is inhabited by a single ethnic group. The geographic areas and elevations mainly occupied by the five ethnic groups are different; thus, the elevational range of the study sites varied greatly among the five ethnic groups (Table 3). Hani village has the largest area, while Jinuo has the smallest area. Due to historical and political factors, the Hani people now live in basins, semi-mountains and mountains in a large part of Xishuangbanna. The Jinuo ethnic group lives in a small and relatively concentrated area, namely, the Jinuo Mountain and Buyuan Village Committee. The Dai people live in most valleys and plains throughout the whole state, at lower elevations than the other nearby ethnic groups. The Bulang and Lahu ethnic groups live at various elevations in relatively concentrated areas. When the reported plant species of the ethnic groups were compared, we found that the Hani people contributed 32 species, followed by the Bulang and Dai people with 22 species and 21 species. The Bulang reported the largest number of URs (346), which may have resulted from that group having the largest number of informants. The number of plants and URs collected from the Jinuo people were lower than those collected from other ethnic groups.

A total of 1219 use reports for 55 plant species were collected from the five ethnic groups (full list is shown on Appendix 1). Of these species, 22 plant species are used by two or more ethnic groups. The network analysis graph (Fig. 3) shows the relationship between plants and ethnic groups. The edge between the plant node and ethnic group node indicates that the plant is utilized by the ethnic group to control hematophagous invertebrates. Five species (*A. indica*, *C. excavata*, *Clerodendrum bungee*, *Conoclinium coelestinum*, and *N. tabacum*) are common to all five groups; *A. austroyunnanensis*, *Chromolaena odorata*, and *Laggera pterodonta* are used by four of five groups. Six species are used by three groups, and eight species are used by two groups. These plant nodes generally are larger in size, indicating that they have more use reports recorded. Among them, three plants are obviously used more than other plants, namely, *A. indica* (294 UR), *A. austroyunnanensis* (214 UR) and *N. tabacum* (208 UR). These are the dominant species used, accounting for approximately 59% of the total URs.

Table 2

Overview of the plant species used against hematophagous invertebrates in the Bulang, Jinuo and Lahu villages of Xishuangbanna (China) and references to previous bioactive studies of these or related plant species. FC, frequency of citation. FL, fidelity level. UV, use value.

Species, family (voucher number)	Most common local name(s) ^a	Status ^b	Habit ^c	Parts ^d	Method of application	Target category	FC	UV	Scientific literature
<i>Ageratum conyzoides</i> L., Asteraceae, 19LZN07	B: nia ge long; ya ming wai	W	H	AP; L	Burned for fumigation; Leaves crushed and applied on skin	Mosquitoes	13	0.05	Mosquito repellent (Egunyomi et al., 2010; Trongtokit et al., 2005); Pesticide (Bouda et al., 2001; Moreira et al., 2007)
<i>Allium sativum</i> L., Amaryllidaceae, 20LZN01	B: hong huo	C	H	Bu	Crushed and applied on skin Crushed and applied on skin	Mosquitoes Land leeches	2 1	0.01	Mosquito repellent (Campbell et al., 2011); Insect repellent and insecticide (Mobki et al., 2014);
<i>Artemisia austroyunnanensis</i> Y. Ling & Y.-R. Ling, Asteraceae, 19LZN05	L: a ka B: bia; se duo yi; a (se) bu lang J: di di; jia kuo jia la; guo fu guo lo	W	H	Br; L	Burned for fumigation; Leaves crushed and applied on skin; Carrying leaves Leaves crushed and applied on skin Put in chicken rings	Mosquitoes Land leeches Chicken mites	145 27 21	0.81	<i>Artemisia nilagirica</i> as mosquito larvicide, adulticide, and repellent (Panneerselvam et al., 2012)
<i>Artemisia indica</i> Willd., Asteraceae, 19LZN06	L: a ka B: bia; se duo yi; a (se) bu lang J: di di; jia kuo jia la; guo fu guo lo	W	H	Br; L	Burned for fumigation; Leaves crushed and applied on skin; Carrying leaves; Leaves crushed and applied on skin Put in chicken rings	Mosquitoes Land leeches Chicken mites	145 27 21	0.81	<i>Artemisia vulgaris</i> as mosquito repellent (Hwang et al., 1985)
<i>Artocarpus heterophyllus</i> Lam., Moraceae, 19LZN27	B: ge nong	C	T	Fr	Minced and thrown in the field	Aquatic leeches	5	0.02	Anthelmintic (Hurtada et al., 2012)
<i>Blumea balsamifera</i> (L.) DC., Asteraceae, 19LZN01	L: xing jin B: se gong gang; gua na	W	H	Br; L	Burned for fumigation; Leaves crushed and applied on skin	Mosquitoes	7	0.03	Insecticide (Wang et al., 2012; Chu et al., 2013)
<i>Boenninghausenia albiflora</i> (Hook.) Rchb. ex Meisn., Rutaceae, 19LZN14	B: ki mu o	W	H	L	Burned for fumigation; Placed indoors; Worn on head Leaves crushed and applied on skin Put in chicken rings	Mosquitoes Lice Land leeches Chicken mites	8 1 1 9	0.06	Insecticide (Tandon and Mittal, 2018; Khan et al., 2017; Mehmood and Shahzadi, 2014); Ant repellent (Mehmood and Shahzadi, 2014)
<i>Castanopsis mekongensis</i> A. Camus, Fagaceae, 19LZN42	B: ga sa	W	T	Ba	Crushed and applied on skin	Land leeches	3	0.01	—
<i>Cestrum nocturnum</i> L., Solanaceae, 19LZN17	B: da ong ne	C, S	S	Fl	Plant the tree in the yard; Placed indoors; Worn on head	Mosquitoes	8	0.03	Mosquito repellent and larvicide (El-Sheikh et al., 2016; Patil et al., 2011); Insecticide (Jawale and Dama, 2010)
<i>Chromolaena odorata</i> (L.) R.M. King & H. Rob., Asteraceae, 19LZN03	L: na bo gu B: nia mi hang; nai ge la	W	H	Br; L	Burned for fumigation Leaves crushed and applied on skin	Mosquitoes Land leeches	8 1	0.04	Insecticide (Delobel and Malonga, 1987; Bouda et al., 2001); Mosquito repellent (Gillij et al., 2008; Maharaj et al., 2010; Gade et al., 2017); Mosquito larvicide (Gade et al., 2017)
<i>Cinnamomum bejolghota</i> (Buch.-Ham.) Sweet, Lauraceae, 19LZN09	L: xiang nuo	W	T	Ba	Dried and ground into powder, made into incense for burning	Mosquitoes	2	0.01	Anthelmintic (Gogoi et al., 2014)
<i>Cinnamomum iners</i> Reinw. ex Blume, Lauraceae, 19LZN10	L: xiang nuo	W	T	Ba	Dried and ground into powder, made into incense for burning	Mosquitoes	2	0.01	<i>Cinnamomum osmophloeum</i> as mosquito adulticide and larvicide (Mdoe et al., 2014) <i>Cinnamomum zeylanicum</i> as insecticide (Volpato et al., 2016)
<i>Cissus javana</i> DC., Vitaceae, 19LZN34	B: en dai lai	W	L	L	Put in chicken rings	Chicken mites	2	0.01	—
<i>Clausena excavata</i> Burm. f., Rutaceae, 19LZN13	L: a xie ci B: guo neng la wai; a kelep J: ya o sha ne	W	S	L	Burned for fumigation; Crushed and applied on skin; Placed under bed Placed under bed Put in chicken rings	Mosquitoes Lice Chicken mites	6 2 23	0.13	Mosquito larvicide (Cheng et al., 2009)
<i>Clerodendrum bungei</i> Steud., Lamiaceae, 19LZN19	L: a pa nu B: den hen; wa ke le J: bu le ba a pu	W	S	L	Burned for fumigation Put in chicken rings	Mosquitoes Chicken mites	19 1	0.08	—
<i>Conoclinium coelestinum</i> (L.) DC., Asteraceae, 19LZN02	L: gai fang mu B: nia (ya) gong sang J: yi cuo bi ci	W	H	AP; L	Burned for fumigation; Slightly heated on fire and placed indoors Leaves crushed and applied on skin	Mosquitoes Land leeches	10 2	0.05	Acaricide (Nong et al., 2012)

(continued on next page)

Table 2 (continued)

Species, family (voucher number)	Most common local name(s) ^a	Status ^b	Habit ^c	Parts ^d	Method of application	Target category	FC	UV	Scientific literature
<i>Cymbopogon citratus</i> (DC.) Stapf, Poaceae, 19LZN40	L: zi huo ma	C	H	L	Burned for fumigation	Mosquitoes	2	0.01	Mosquito repellent (Solomon et al., 2012); Mosquito adulticide (Phasomkusolsil and Soonwera, 2011); Housefly toxicity (Kumar et al., 2013)
<i>Datura metel</i> L., Solanaceae, 19LZN18	B: ke ba	W	H	L	Burned for fumigation	Mosquitoes	2	0.01	Mosquito larvicide (Murugan et al., 2015; Chakkaravarthy et al., 2011)
<i>Elsholtzia blanda</i> (Benth.) Benth., Lamiaceae, 19LZN24	J: a lie pa xi li; la fe cuo po	W	H	L	Burned for fumigation; Crushed and applied on skin	Mosquitoes	3	0.01	Insecticide (Lü and He, 2010)
<i>Eranthemum shweliense</i> W.W.Sm., Acanthaceae, 19LZN38	J: xie mu	W	S	L	Crushed and applied on skin	Mosquitoes	2	0.01	—
<i>Laggera pterodonta</i> (DC.) Sch.Bip. ex Oliv., Asteraceae, 19LZN04	L: su guo ma B: e le bing; de long	W	H	AP; L	Burned for fumigation; Slightly heated on fire and placed indoors	Mosquitoes	15	0.06	Mosquito adulticide (Njan-Nloga et al., 2007); Insecticide (Guo et al., 2017)
<i>Litsea cubeba</i> (Lour.) Pers., Lauraceae, 19LZN12	B: da ma lao leng	W	T	L; Fr	Crushed and applied on skin	Mosquitoes	2	0.01	Mosquito repellent (Noosidum et al., 2008; Trongtokit et al., 2005); Nematicide (Park et al., 2007); Insecticide (Yang et al., 2014)
<i>Lobelia seguinii</i> H. Lév. & Vaniot, Campanulaceae, 19LZN39	L: mi (mu) duo yo	W	H	L	Burned for fumigation	Mosquitoes	1	0.02	—
<i>Melicope pteleifolia</i> (Champ. ex Benth.) T.G. Hartley, Rutaceae, 19LZN15	L: si ci ka	W	S	L	Put in chicken rings	Chicken mites	3		
<i>Nicotiana tabacum</i> L., Solanaceae, 19LZN16	L: su B: ga (en) bai; ya; ya qing ai J: ya huo	C	H	L	Put in chicken rings	Chicken mites	2	0.01	Main compound leptol A as mosquito adulticide (Li et al., 2003)
					Burned for fumigation; Leaves crushed and applied on skin; Leaves soaked in water and sprayed	Mosquitoes	32	0.42	Insecticide (Akumefula et al., 2014)
					Leaves crushed and applied on skin; Leaves soaked in water and wiped	Land leeches	55		
<i>Polygonum barbatum</i> L., Polygonaceae, 17GY019	J: she pi	W	H	AP	Put in chicken rings	Chicken mites	12		
<i>Phyllanthus emblica</i> L., Phyllanthaceae, 19LZN41	B: xi mi	W	T	Br; L	Put under beds	Chicken mites	3	0.02	—
					Put in chicken rings	Lice	1		
					Fresh branches or dried powdered leaves burned for fumigation; Slightly heated on fire and placed under seats; Placed under bed	Mosquitoes	6	0.02	Mosquito adulticide (Bagavan et al., 2009); Mosquito larvicide (Bagavan et al., 2009; Jeyasankar et al., 2012); Moth larvicide and anti-feedant (Minj et al., 2017)
<i>Pinus yunnanensis</i> Franch., Pinaceae, 19LZN31	L: tuo sa B: gua gi	W	T	L; Fr	Burned for fumigation	Mosquitoes	3	0.01	<i>Pinus longifolia</i> as mosquito repellent and larvicide (Ansari et al., 2005)
<i>Prunus persica</i> (L.) Batsch, Rosaceae, 19LZN33	L: a vi J: se ye; pa kuo	C	T	L	Leaves crushed and applied on skin	Mosquitoes	1	0.09	Fly larvicide (Seo and Park, 2012)
<i>Psidium guajava</i> L., Myrtaceae, 19LZN30	J: ma gui	C, S	T	L	Put in chicken rings	Chicken mites	21		
<i>Thalictrum foliolosum</i> DC., Ranunculaceae, 19LZN35	B: ki mu leng	W	H	L	Burned for fumigation	Chicken mites	2	0.01	Anthelmintic (Nil et al., 2015)
<i>Toona sinensis</i> (A. Juss.) M. Roem., Meliaceae, 19LZN36	B: mei yong J: gu si	C	T	Ba; L	Put in chicken rings	Mosquitoes	5	0.05	—
					Burned for fumigation	Chicken mites	6		
					Put in chicken rings	Mosquitoes	2	0.03	Insect repellent (Chen, 2010); Insecticide (Adfa et al., 2017)
					Put in chicken rings	Chicken mites	5		

^a B: Bulang; J: Jinuo; L: Lahu.^b W: wild; C: cultivated; S: semi-cultivated (cultivated and reverted to wild status, and neglected cultivated plants).^c H: herb; T: tree; S: shrub; L: liana.^d AP: aerial parts; Ba: bark; Br: branches; Bu: bulbs; Fl: flowers; Fr: fruits; L: leaves.

Apart from similar uses of plants, each ethnic group also used its own unique plant species. “Pendant” plant nodes are those that are only shown as reported from a single ethnic group. Sixteen species (50%) of plants reported by the Hani people were not used by the other ethnic groups. The proportion of specific species for the other four ethnic groups was lower, namely, 26.18% for Blang, 33.3% for Jino, 23.5% for Lahu, and 23.8% for Dai. The Jaccard index (JI) was calculated to compare plant species reported between any two ethnic groups, and the JI ranged from 18.92 to 43.33 (see Table 4). The highest similarity was between the Bulang and Dai people, while the greatest difference was between the Hani and Jinuo people.

3.3. Targeted hematophagous invertebrates of five ethnic groups

Hematophagous invertebrates contain a large number of animal species. In this study, the main hematophagous invertebrates local people targeted were divided into the following categories: mosquito, chicken mite, land leech, aquatic leech, lice and flea. Categories targeted by different ethnic groups were not exactly the same, and the plants utilized by ethnic groups were also different. Some of the reported plants used by multiple ethnic groups may also have been used to control different categories of invertebrates. For example, *Ageratum conyzoides* were reported to repel mosquitoes by the Bulang and Dai people, while it was used against land



Fig. 2. The process of ritual incense of Lahu people in Xishuangbanna. The bark of *Cinnamomum bejolghota* (A) and *Cinnamomum iners* (B) were dried (C) and ground down (D) into powder. Then, the powder was mixed with hot water (E) and applied on the stick (F). Finally, after drying, the incense can be burned to generate smoke (G).

Table 3

Comparison of study sites, informants and collected data from the Bulang, Jinuo, Lahu, Dai and Hani people of Xishuangbanna.

Ethnic group	Bulang	Jinuo	Lahu	Dai	Hani
Number of informants	113	63	61	81	91
Number of study sites	12	12	12	16	12
Elevational range of study sites (m)	633–1358	779–1174	780–1579	536–1202	547–1846
Total number of plants collected	22	12	17	21	32
Total number of use reports	346	151	232	181	309

leeches by the Hani people. The heat map (green) in Fig. 4 shows the number of URs for targeted hematophagous invertebrate categories per ethnic group. Mosquito is the most frequently mentioned target category among all five ethnic groups, yielding the largest number of use reports (747 UR). Chicken mites (246 UR) and land leeches (175 UR) were the other two main categories targeted by all five ethnic groups. For the reported plant species (blue heat map), the largest number of taxa were used for mosquitoes by the Bulang, Lahu, Hani and Dai people, while chicken mites were targeted by the Jinuo people. When the blue heat map was compared with the green heat map, not all the trends in these three main categories were mirrored. This may indicate that in the same ethnic group, the importance of category and the richness of knowledge are not necessarily proportional. In the same category, the richness of knowledge of different ethnic groups was compared. In comparison to the other ethnic groups, the Hani people use more plant species for mosquitoes and land leeches, and the Dai people use more plants for chicken mites. In addition, only a small part (4.1%) of the URs were recorded as targeting other categories. The Bulang and Hani people each utilize one species (5 and 25 UR, respectively) against aquatic leeches. Lice is controlled with

plants by the Bulang, Jinuo, Dai and Hani people, but only 8 URs were recorded for 7 of the plants collected. Only the Hani people reported 13 URs of 5 plants to prevent flea bites.

With the orange heat map, ICF was calculated to evaluate the variability in the use of plants for each target category. The highest ICF value (1.00) was found for plants the Hani and Bulang people use to control aquatic leeches. For mosquitoes, chicken mites and land leeches, the five ethnic groups all yielded high ICF values (higher than 0.7). These data indicate that each ethnic group has a high level of cultural consensus when selecting plants for these target categories. A low ICF value indicates that the informants disagree on the taxa that should be used within a category. For example, plants used by the Jinuo, Dai and Hani people to control lice were cited by only a few people and were considered to be of low cultural importance.

3.3. Analysis of informant knowledge

Through analysis of variance, the usage of plants in relation to ethnic group, gender and botanical knowledge was determined (Table 5). We found that there were significant differences in the

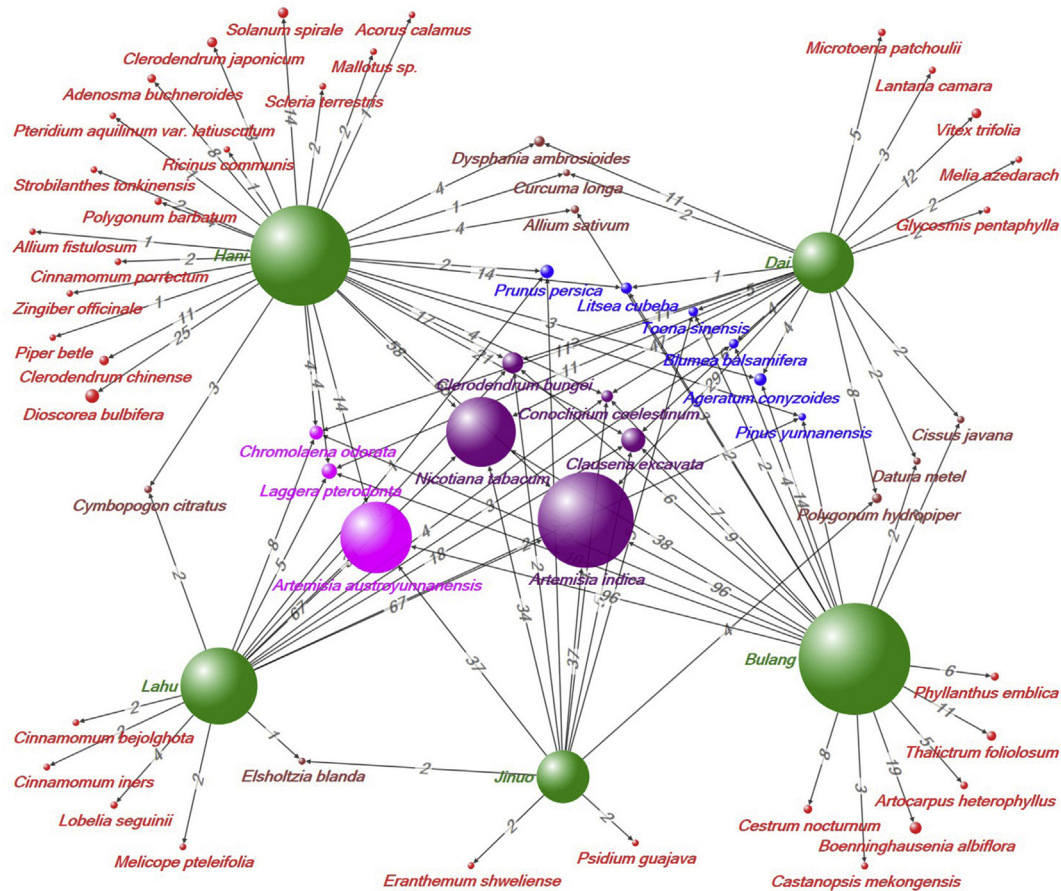


Fig. 3. Ethnic group-plant species network. Plant species are shown linked to the five ethnic groups (green). Plant vertices with purple, fuchsia, blue, brown and red indicate plants reported by 5, 4, 3, 2, and 1 ethnic group(s), respectively. The values along the edges (lines/connections) indicate the number of URs directed to plant species as contributed per ethnic group. The size of the node is converted from the number of URs of the plant.

Table 4

Jaccard index (JI) of plant species used between different ethnic groups of Xishuangbanna.

	Bulang	Jinuo	Lahu	Hani	Dai
Bulang	100.00	25.92	34.48	28.57	43.33
Jinuo		100.00	31.82	18.92	26.92
Lahu			100.00	28.95	26.67
Hani				100.00	26.17
Dai					100.00

Lahu and Hani people was also significantly higher than Jinuo people. We divided informants into two groups according to medicinal plant knowledge—herbalists and non-herbalists. The results showed that the average UR of the herbalists was 3.86, which was significantly higher than the average of 2.75 for non-herbalists. Because most herbalists are males, we compared the number of URs provided by non-herbalist male and female informants from the villages. The average UR of male villagers (2.92) was not significantly different than that of female villagers (2.55). A weak positive correlation ($r = 0.116$; $P = 0.04$) between the age of the informants (non-herbalists) and the number of URs was observed.

4. Discussion

Through ethnobotanical surveys, we documented 32 plants that were used by three mountain ethnic groups (Bulang, Jinuo

number of URs among the different ethnic groups. The Duncan analysis method was used for pairwise comparisons. The results showed that the average UR of the Dai people was significantly lower than that of Bulang, Lahu and Hani. The average UR of the

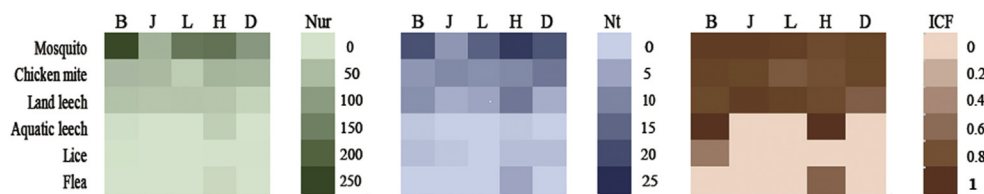


Fig. 4. Heat map for targeted categories, as recorded per ethnic group in Xishuangbanna (B-Bulang, J-Jinuo, L-Lahu, H-Hani, and D-Dai). The blue map shows the number of applicable plant taxa (Nt) recorded per ethnic group, while the green map represents the degree of UR (Nur). Informant consensus factors (ICFs) were calculated for each target category of the five ethnic groups.

and Lahu) of Xishuangbanna to control hematophagous invertebrates, including mosquitoes, leeches, chicken mites and lice. Local inhabitants did not discern whether the role of the plant was to repel or kill. Even if plants are toxic, it is not always obvious because the plants are usually used in open areas. Most of these plants are cultivated or common wild herbs with a large amount of resources. Thus, they are easily available and accessible to local people, similar to insect-repelling plants in other areas (Innocent et al., 2014; Karunamoorthi et al., 2009; Mavundza et al., 2011). For 21 of the plant species recorded in this study, several bioassays have been performed to test their repellent and/or insecticidal properties (Table 2). The effectiveness of four species traditionally used as insecticides or repellents has been somewhat corroborated by research that has shown that closely related species (from the same genus) have insecticidal or repellent activity. We are unaware of studies that have examined insecticidal or repellent activities of the remaining seven plant species. These untested plants belong to families that have not often garnered attention from researchers who study biological pesticides or repellents. Therefore, ethnobotany may contribute substantially to the discovery of new insecticide or repellent plants.

Including previous surveys of the Dai and Hani people, our research team surveyed a total of five ethnic groups in the Xishuangbanna area. The ethnic groups usually speak their own language and retain their respective cultures, customs and festivals. Villages we visited are often inhabited by a single ethnic group. However, there may also be villages of other ethnic groups nearby, and they can communicate with each other in Mandarin or other national dialects. Network analysis of the relationship between ethnic group and plant showed that 22 of the 55 plant species are used by two or more ethnic groups. There were certain similarities between any two ethnic groups, and the JI ranged from 18.92 to 43.33. The similarity may be due to similar criteria for selecting plants. Most informants believed that plants with strong smells can drive away hematophagous invertebrates, and many plants used by more than one ethnic group were common aromatic plants, including *A. indica*, *A. conyzoides*, *C. odorata*, *N. tabacum*, and *L. pterodonta*. Communication among groups may also be one reason for the use of similar plants among these groups. For example, a Dai informant stated that he learned about the repellent use of *Litsea cubeba* from the Hani people. The highest similarity among the plants used was between the Bulang and Dai people. This may be because the Bulang and Dai people have the closest cultural exchanges, in large part because the Bulang people can speak the Dai language and share the same religious belief (Hinayana Buddhism) as that of the Dai people. In addition, coincidence may be responsible for the same choice of plants by different ethnic groups.

Apart from similar uses of the plants, each ethnic group also retains its own unique knowledge. These differences in knowledge may be related to their environment. Being in different environments, they have different nearby plant resource banks from which to choose. *A. austroyunnanensis* is widely used by the Bulang, Jinuo, Lahu and Hani people, but the Dai people do not use it because it is not distributed around Dai villages. The distribution of plants changes with elevation. Therefore, the abundance of plants used by the Hani people may be related to the fact that Hani people live within the widest elevational range, whereas the Jinuo people live within the smallest range. In addition, cultural differences may also be a very important factor. Due to their respective cultural identities, some culturally representative plant uses will not be easily shared. For example, ritual incense made from *C. bejolghota* and

Table 5

Relationship between UR of informant and ethnic group, occupation, and gender.

Variable	Number	Average UR	Variance	P ($\alpha = 0.05$)
Ethnic group				
Bulang	113	3.06 ^{ab}	2.18	0.00
Jinuo	63	2.40 ^{bc}	1.99	
Lahu	61	3.80 ^a	1.99	
Hani	91	3.38 ^a	3.00	
Dai	81	2.23 ^c	2.05	
Medicinal knowledge				
Herbalist	83	3.86	2.42	0.00
Non-herbalist	326	2.75	2.30	
Gender (informants except for herbalists)				
Male	176	2.92	2.32	0.15
Female	150	2.55	2.27	

Different letters in the upper right corner of the average UR value represent significant difference, $P < 0.05$.

C. iners is only used by the Lahu people. The insect-repelling plant *Adenosma buchneroides* is worn on the head and regarded as a symbol of the Hani people. Many ethnic groups share the custom of hanging plants on door beams, and they think these plants can keep evil spirits out. These plants are usually different and represent their own culture. Some of these plants are also used by an ethnic group only to prevent bites from hematophagous invertebrates, such as *Castanopsis mekongensis* for the Bulang people, *Vitex trifolia* for the Dai people, and *Acorus calamus* for the Hani people.

Mosquitoes, chicken mites and land leeches are the three main categories targeted by all five ethnic groups. The number of URs can reflect the importance of the category in the ethnic group, and the diversity of plant species indicates the richness of the ethnic group's knowledge. Mosquito is the most important target category, yielding the largest number of use reports for all five ethnic groups and the most diverse botanical knowledge for four ethnic groups. Mosquitoes are ubiquitous in homes, fields and forests and may be present year-round in Xishuangbanna. Mosquito bites result in not only discomfort but also risks of contracting many diseases. Xishuangbanna has historically been a high-risk area for malaria, and dengue fever cases have become common in recent years. Public education programs have increased the attention local inhabitants give to mosquito control. Chickens are an important type of poultry that most families raise and are widely eaten and sold for money. Chicken mites seriously affect the health and yield of chickens and therefore are the second most targeted category. The Dai people use more plants for chicken mites than other ethnic groups, while the Hani people use the most plant species against the other categories. Among the plants reported by the Jinuo people, the most part is used for chicken mites. These results may indicate that chickens occupy a more important position in the Dai and Jinuo ethnic groups (Song, 1985). Land leeches not only suck human blood but also negatively affect other mammals, including cattle. However, only a few botanical remedies for the control of lice, fleas and leeches were reported. This may be related to the environments in which local people live. For example, Dai people, who mainly live in forests, report relatively fewer URs and plants related to controlling these pests than do other ethnic groups. Currently, their economic conditions have greatly improved, and more attention has been paid to personal and environmental hygiene. Fleas, lice and other ectoparasites have almost disappeared. With the use of fertilizers and synthetic pesticides, there are few leeches in paddy fields. Changes in economic conditions and production methods have also led to a decline in the level of knowledge about traditional insecticide/



Fig. 5. Three plants with the most potential to be developed as insecticides or repellents. A, *Artemisia indica*; B, *Nicotiana tabacum*; and C, *Clausena excavata*.

repellent plants. Although the Dai people reported more plants, their average knowledge level (UR) was the lowest. This may be because they occupy the center of most towns and are most affected by modern culture.

To screen out the plants with the greatest potential and utilization range, UV, diverse targeted categories and common use among the five ethnic groups were taken into consideration. As a result, *A. indica*, *N. tabacum*, and *C. excavata* were the three plants with the most potential to be developed as insecticides or repellents (Fig. 5). *A. indica* was the most popular plant that prevented mosquito bites among all five ethnic groups. It has also been widely used to control chicken mites and land leeches. Although many informants reported using *A. austroyunnanensis* and *A. indica* for this purpose, they generally believe that the activity of *A. indica* is better. To date, we have found no reports on the activity of *A. indica* or *A. austroyunnanensis* as insect repellent or insecticide. *Artemisia vulgaris* of the same genus is also an insect-repelling plant traditionally used by people in many regions. It has shown strong mosquito-repelling activity, and its essential oil contains multiple repellent compounds (Hwang et al., 1985). Therefore, *A. indica* deserves additional and more in-depth research and has the potential to be developed as a broad-spectrum and highly effective insecticide or repellent. *N. tabacum* is one of the plants that has changed the history of the world. Local people plant it mainly for processing into tobacco. At the same time, it is also used by all ethnic groups to control mosquitoes, chicken mites and land leeches. Smoking was also reported by informants to be useful in preventing insect bites. Tobacco leaves are frequently placed, crushed or soaked in water. *N. tabacum* extract has been shown to cause 70% mortality in *Sitophilus zeamais* and *Sitophilus oryzae* (Akumefula et al., 2014). Nicotine, the main active compound, is one of the best plant-derived pesticides and is widely used in agriculture (Steppuhn et al., 2004). Its activity as a repellent remains to be studied, and it is not known whether other active repellent substances exist in addition to nicotine. *C. excavata* is commonly used by the five groups to control chicken mites. Four of the five groups also use it to repel mosquitoes. The LC_{50} values (the concentrations causing 50% larva mortality in 24 h) of its essential oils against fourth-instar larvae of *Aedes aegypti* and *Aedes albopictus* were 37.1–40.1 $\mu\text{g/ml}$ and 41.1–41.2 $\mu\text{g/ml}$, respectively (Cheng et al., 2009). *Clausena anisata* of the same genus is used traditionally as an insect repellent by various communities in Africa and Asia (Mukandiwa et al., 2016). Laboratory topical application assays indicate that the acetone crude extract (15%) showed 93% repellence and the hexane fraction (7.5%) showed 67% repellence after 3 h (Mukandiwa et al., 2016). Although there are only a few reports of

other similar plants, this result may be caused by a variety of factors. This scenario does not mean that the activity of these plants is weak. Therefore, these plants can also be used for activity screening, which is more convenient than the general screening method.

5. Conclusion

The Bulang, Jinuo and Lahu people of Xishuangbanna know how to use specific local plants to protect themselves against hematophagous invertebrates. A total of 709 use reports of 32 plant species were collected from these ethnic groups. The five ethnic groups in the same area have common knowledge about traditional botanical knowledge against hematophagous invertebrates, but they also have maintained their own unique knowledge. These differences mainly are due to the diversity in the environment and culture. The interactive and coexisting relationship between biodiversity and cultural diversity shows that the disappearance of traditional culture has accelerated the loss of biodiversity. Cultural diversity provides not only historical experience and observations for biodiversity protection but also practical value. In this study, our survey of the plants traditionally used by ethnic minority communities to control hematophagous invertebrates has identified several plant species that should be screened for insecticidal and repellent activity, including *A. indica*, *N. tabacum* and *C. excavata*.

Author contributions

Ethnobotanical surveys were conducted by ZL, RF, YG, ZQ, and LW; Specimens were identified by ZL and LW; Data was analyzed by YG, ZL and CW. Manuscript drafted by YG and revised by YW.

Declaration of competing interest

There are no conflicts of interest to declare.

Acknowledgements

We are most grateful to all interviewee from Xishuangbanna for their hospitality and willingness to share their knowledge with us. We are also very grateful to other partners in the field investigation. This study was supported by grant from the National Natural Science Foundation of China [31670337] and Plant Germplasm Resources Innovation Project of Chinese Academy of Sciences [KFJ-BRP-007-002].

Appendix 1

List of plants used against hematophagous invertebrates by the Bulang, Jinuo, Lahu, Dai, and Hani people in Xishuangbanna

Plant	Family	Habit	Target	Frequency in each ethnic group				
				Bulang	Jinuo	Lahu	Dai	Hani
<i>Acorus calamus</i> L.	Acoraceae	Herb	Land leeches					1
<i>Adenosma buchneroides</i> Bonati	Plantaginaceae	Herb	Mosquitoes					4
			Fleas					4
<i>Ageratum conyzoides</i> L.	Asteraceae	Herb	Mosquitoes	13			4	
			Land leeches	1				3
<i>Allium fistulosum</i> L.	Amaryllidaceae	Herb	Mosquitoes					1
<i>Allium sativum</i> L.	Amaryllidaceae	Herb	Mosquitoes	2				1
			Land leeches	1				3
<i>Artemisia austroyunnanensis</i> Ling & Y.R. Ling	Asteraceae	Herb	Mosquitoes	72	21	52		9
			Land leeches	8	8	11		3
			Chicken mites	14	6	1		1
<i>Artemisia indica</i> Willd.	Asteraceae	Herb	Mosquitoes	72	21	52	24	45
			Land leeches	8	8	11	1	3
			Chicken mites	14	6	1	1	11
			Fleas					4
<i>Artocarpus heterophyllus</i> Lam.	Moraceae	Tree	Aquatic leeches	5				
<i>Blumea balsamifera</i> (L.) DC.	Asteraceae	Herb	Mosquitoes	4		3	3	
			Chicken mites				1	
<i>Boenninghausenia albiflora</i> (Hook.) Rchb. ex Meisn.	Rutaceae	Herb	Mosquitoes	8				
			Lice	1				
			Land leeches	1				
			Chicken mites	9				
<i>Castanopsis mekongensis</i> A. Camus	Fagaceae	Tree	Land leeches	3				
<i>Cestrum nocturnum</i> L.	Solanaceae	Shrub	Mosquitoes	8				
<i>Chromolaena odorata</i> (L.) R. M. King & H. Rob.	Asteraceae	Herb	Mosquitoes	2		6	6	2
			Land leeches			1	5	2
<i>Cinnamomum bejolghota</i> (Buch.-Ham.) Sweet	Lauraceae	Tree	Mosquitoes			2		
<i>Cinnamomum iners</i> Reinw. ex Blume	Lauraceae	Tree	Mosquitoes			2		
<i>Cinnamomum porrectum</i> (Roxb.) Kosterm.	Lauraceae	Tree	Mosquitoes					2
<i>Cissus javana</i> DC.	Vitaceae	Line	Chicken mites	2			2	
<i>Clausena excavata</i> Burm.f.	Rutaceae	Shrub	Mosquitoes	5		1	4	3
			Lice	2				1
			Fleas					3
			Chicken mites	1	5	17	2	14
<i>Clerodendrum bungei</i> Steud.	Lamiaceae	Shrub	Mosquitoes	6	2	11	10	11
			Chicken mites			1	1	6
<i>Clerodendrum chinense</i> (Osbeck) Mabb.	Lamiaceae	Shrub	Mosquitoes					11
<i>Clerodendrum japonicum</i> (Thunb.) Sweet	Lamiaceae	Shrub	Mosquitoes					11
<i>Conoclinium coelestinum</i> (L.) DC.	Asteraceae	Herb	Mosquitoes	7		3	3	4
			Land leeches		1	1		
<i>Curcuma longa</i> L.	Zingiberaceae	Herb	Mosquitoes				2	1
<i>Cymbopogon citratus</i> (DC.) Stapf	Poaceae	Herb	Mosquitoes			2		3
<i>Datura metel</i> L.	Solanaceae	Herb	Mosquitoes	2			2	
<i>Dioscorea bulbifera</i> L.	Dioscoreaceae	Vine	Aquatic leeches					25
<i>Dysphania ambrosioides</i> (L.) Mosyakin & Clemants	Amaranthaceae	Herb	Mosquitoes				2	2
			Chicken mites				8	2
			Lice				1	
<i>Elsholtzia blanda</i> (Benth.) Benth.	Lamiaceae	Herb	Mosquitoes		2	1		
<i>Eranthemum shweliense</i> W.W.Sm.	Acanthaceae	Shrub	Mosquitoes		2			
<i>Glycosmis pentaphylla</i> (Retz.) DC.	Rutaceae	Tree	Chicken mites				2	
<i>Laggera pterodonta</i> (DC.) Sch.Bip. ex Oliv.	Asteraceae	Herb	Mosquitoes	10		5	10	3
			Chicken mites				1	
			Land leeches					1
<i>Lantana camara</i> L.	Verbenaceae	Shrub	Mosquitoes				3	
<i>Litsea cubeba</i> (Lour.) Pers.	Lauraceae	Tree	Mosquitoes	2			1	14
<i>Lobelia seguinii</i> H.Lév. & Vaniot	Campanulaceae	Herb	Mosquitoes			1		
			Chicken mites			3		
<i>Mallotus</i> sp.	Euphorbiaceae	Shrub	Mosquitoes					2
<i>Melia azedarach</i> L.	Meliaceae	Tree	Mosquitoes				1	
			Lice				1	
<i>Melicope pteleifolia</i> (Champ. ex Benth.) T.G. Hartley	Rutaceae	Tree	Chicken mites			2		
<i>Microtoena patchoulia</i> (C.B. Clarke ex Hook.f.) C.Y. Wu & S.J. Hsuan	Lamiaceae	Herb	Mosquitoes				4	
			Land leeches				1	
<i>Nicotiana tabacum</i> L.	Solanaceae	Herb	Mosquitoes	10	9	13	15	28
			Land leeches	19	21	15	12	18
			Chicken mites	7	4	1	18	9
			Fleas					1
<i>Polygonum barbatum</i> L.	Polygonaceae	Herb	Chicken mites		3		8	
			Lice		1			
<i>Polygonum hydropiper</i> L.	Polygonaceae	Herb	Mosquitoes					4
<i>Phyllanthus emblica</i> L.	Phyllanthaceae	Tree	Mosquitoes	6				
<i>Pinus yunnanensis</i> Franch.	Pinaceae	Tree	Mosquitoes	1		2		1
			Chicken mites					1

(continued on next page)

Appendix 1 (continued)

Plant	Family	Habit	Target	Frequency in each ethnic group				
				Bulang	Jinuo	Lahu	Dai	Hani
<i>Piper betle</i> L.	Piperaceae	Vine	Land leeches					1
<i>Prunus persica</i> (L.) Batsch	Rosaceae	Tree	Mosquitoes	1		1		
			Chicken mites		20			1
			Fleas					1
<i>Psidium guajava</i> L.	Myrtaceae	Tree	Chicken mites		2			
<i>Pteridium aquilinum</i> var. <i>latiusculum</i> (Desv.) Underw. ex A. Heller	Dennstaedtiaceae	Herb	Land leeches					1
<i>Ricinus communis</i> L.	Euphorbiaceae	Herb	Lice					1
<i>Scleria terrestris</i> (L.) Fass.	Cyperaceae	Herb	Mosquitoes					1
			Land leeches					1
<i>Solanum spirale</i> Roxb.	Solanaceae	Herb	Chicken mites					14
<i>Strobilanthes tonkinensis</i> Lindau	Acanthaceae	Herb	Mosquitoes					2
<i>Thalictrum foliolosum</i> DC.	Ranunculaceae	Herb	Mosquitoes	5				
			Chicken mites	6				
<i>Toona sinensis</i> (Juss.) M.Roem.	Meliaceae	Tree	Mosquitoes	2			1	
			Chicken mites		5		4	
<i>Vitex trifolia</i> L.	Lamiaceae	Shrub	Mosquitoes				6	
			Chicken mites				6	
<i>Zingiber officinale</i> Roscoe	Zingiberaceae	Herb	Land leeches					1

References

- Abe, R., Ohtani, K., 2013. An ethnobotanical study of medicinal plants and traditional therapies on Batan Island, the Philippines. *J. Ethnopharmacol.* 145 (2), 554–565.
- Adfa, M., Kusnanda, A., Saputra, W.D., et al., 2017. Termiticidal activity of *Toona sinensis* wood vinegar against *Coptotermes curvignathus* holmgren. *Rasayan J. Chem.* 10, 1088–1093.
- Akumefula, M.I., Onwusonye, J., Osuji, C.N., et al., 2014. Comparative assessment of the insecticidal potency of tobacco leaves extract (*Nicotiana tabacum*), black pepper seeds (uziza) extract (*Piper guineense*) and african pepper seeds (uda) extract (*Xylapia aetiopica*). *Chem. Mater. Res.* 6 (9), 57–59.
- Ansari, M.A., Mittal, R.K., Razdan, R.K., Sreehari, U., 2005. Larvicidal and mosquito repellent activities of Pine (*Pinus longifolia*, family: Pinaceae) oil. *J. Vector Borne Dis.* 42 (3), 95–99.
- APG, 2009. An update of the Angiosperm Phylogeny Group classification for the orders and families of flowering plants: APG III. *Bot. J. Linn. Soc.* 161 (2), 105–121.
- Bagavan, A., Kamaraj, C., Elango, G., et al., 2009. Adulticidal and larvicidal efficacy of some medicinal plant extracts against tick, fluke and mosquitoes. *Vet. Parasitol.* 166 (3), 286–292.
- Bockarie, M.J., Service, M.W., Barnish, G., et al., 1994. The effect of woodsmoke on the feeding and resting behaviour of *Anopheles gambiae* s.s. *Acta Trop.* 57 (4), 337–340.
- Booppha, B., Eittsayeam, S., Pengpat, K., et al., 2010. Development of bioactive ceramics to control mite and microbial diseases in bee farms. *Adv. Mater. Res.* 93–94, 553–557.
- Bouda, H., Tapondjou, L.A., Fontem, D.A., et al., 2001. Effect of essential oils from leaves of *Ageratum conyzoides*, *Lantana camara* and *Chromolaena odorata* on the mortality of *Sitophilus zeamais* (Coleoptera, Curculionidae). *J. Stored Prod. Res.* 37 (2), 103–109.
- Brown, M., Hebert, A.A., 1997. Insect repellents: an overview. *J. Am. Acad. Dermatol.* 36 (2), 243–249.
- Campbell, C., Gries, R., Khaskin, G., et al., 2011. Organosulphur constituents in garlic oil elicit antennal and behavioural responses from the yellow fever mosquito. *J. Appl. Entomol.* 135 (5), 374–381.
- Campbell, J.B., Thomas, G.B., 1999. MP99-40 the Economics and Control of Insects Affecting Beef Cattle in Nebraska (Northern Great Plains). University of Nebraska Cooperative Extension.
- Chakkaravarthy, V., Ambrose, T., Vincent, S., et al., 2011. Bioefficacy of *Azadirachta indica* (A. Juss) and *Datura metel* (Linn.) leaves extracts in controlling *Culex quinquefasciatus* (Diptera: Culicidae). *J. Entomol.* 8 (2), 191–197.
- Chen, L., 2010. Bioactivities of extracts from *Toona sinensis* against *Sitophilus zeamais*. *J. Anhui Agr. Sci.* 1 (5), 47–49.
- Cheng, S.S., Chang, H.T., Lin, C.Y., et al., 2009. Insecticidal activities of leaf and twig essential oils from *Clausena excavata* against *Aedes aegypti* and *Aedes albopictus* larvae. *Pest Manag. Sci.* 65 (3), 339–343.
- Chu, S.S., Du, S.S., Liu, Z.L., 2013. Fumigant compounds from the essential oil of Chinese *Blumea balsamifera* leaves against the maize weevil (*Sitophilus zeamais*). *J. Chem.* 2013, 289874.
- Chu, B.K., Hooper, P.J., Bradley, M.H., et al., 2010. The economic benefits resulting from the first 8 years of the global programme to eliminate lymphatic filariasis (2000–2007). *PLoS Negl. Trop. Dis.* 4 (6), e708.
- De Boer, H., Vongsombath, C., Pålsson, K., et al., 2010. Botanical repellents and pesticides traditionally used against hematophagous invertebrates in Lao People's Democratic Republic: a comparative study of plants used in 66 villages. *J. Med. Entomol.* 47 (3), 400–414.
- Debboun, M., Frances, S., Strickman, D., 2006. *Insect Repellents-Principles, Methods, and Uses*. CRC Press.
- Delobel, A., Malonga, P., 1987. Insecticidal properties of six plant materials against *Caryedon serratus* (Ol.) (Coleoptera: bruchidae). *J. Stored Prod. Res.* 23 (3), 173–176.
- Egunyomi, A., Gbadamosi, I.T., Idayat, A.O., 2010. Comparative effectiveness of ethnobotanical mosquito repellents used in Ibadan, Nigeria. *J. Appl. Biosci.* 36, 2383–2388.
- El-Sheikh, T.M.Y., Al-Fifi, Z.I.A., Alabboud, M.A., 2016. Larvicidal and repellent effect of some *Tribulus terrestris* L. (Zygophyllaceae) extracts against the dengue fever mosquito, *Aedes aegypti* (Diptera: Culicidae). *J. Saudi Chem. Soc.* 20 (1), 13–19.
- Gade, S., Rajamanikam, M., Vadlapudi, V., et al., 2017. Acetylcholinesterase inhibitory activity of stigmasterol & hexacosanol is responsible for larvicidal and repellent properties of *Chromolaena odorata*. *BBA-Gen. Subjects* 1861 (3), 541–550.
- Gakuya, D.W., Itonga, S.M., Mbaria, J.M., et al., 2013. Ethnobotanical survey of bio-pesticides and other medicinal plants traditionally used in Meru central district of Kenya. *J. Ethnopharmacol.* 145 (2), 547–553.
- Gillij, Y.G., Gleiser, R.M., Zygadlo, J.A., 2008. Mosquito repellent activity of essential oils of aromatic plants growing in Argentina. *Bioresour. Technol.* 99 (7), 2507–2515.
- Gogoi, B., Kakoti, B.B., Bora, N.S., et al., 2014. In vitro antihelmintic activity of bark extract of *Cinnamomum bejolghota* (Buch.-Ham.) in Indian adult earthworm (*Pheretima posthuma*). *Asian Pac. J. Trop. Dis.* 4, S924–S927.
- González, J.A., García-Barriuso, M., Gordaliza, M., et al., 2011. Traditional plant-based remedies to control insect vectors of disease in the Arribes del Duero (western Spain): an ethnobotanical study. *J. Ethnopharmacol.* 138 (2), 595–601.
- Guo, S.-S., Zhang, W.-J., You, C.-X., et al., 2017. Chemical composition of essential oil extracted from *Laggera pterodonta* and its bioactivities against two stored product insects. *J. Food Process. Preserv.* 41 (2), e12941.
- Heinrich, M., Ankli, A., Frei, B., et al., 1998. Medicinal plants in Mexico: healers' consensus and cultural importance. *Soc. Sci. Med.* 47 (11), 1859–1871.
- Hurtada, J., Divina, B., Ducusin, R.J., 2012. Anthelmintic efficacy of jackfruit (*Artocarpus heterophyllus* L.) and tamarind (*Tamarindus indica* L.) leaves decoction against gastrointestinal nematodes of goats. *Philipp. J. Vet. Anim. Sci.* 38, 157–166.
- Hwang, Y.S., Wu, K.H., Kumamoto, J., et al., 1985. Isolation and identification of mosquito repellents in *Artemisia vulgaris*. *J. Chem. Ecol.* 11 (9), 1297–1306.
- Innocent, E., Hassanali, A., Kisinza, W.N., et al., 2014. Anti-mosquito plants as an alternative or incremental method for malaria vector control among rural communities of Bagamoyo District, Tanzania. *J. Ethnobiol. Ethnomed.* 10 (1), 56.
- Jawale, C., B. D., 2010. Insecticidal potential of *Cestrum* sp. (Solanaceae: solanales) against *Tribolium castaneum* and *Tribolium confusum* (herbst) (Coleoptera-ten-ebrionidae). *Deccan Curr. Sci.* 3, 155–161.
- Jeyasankar, A., Premalatha, Elumalai, K., 2012. Larvicidal activity of *Phyllanthus emblica* Linn. (Euphorbiaceae) leaf extracts against important human vector mosquitoes (Diptera: Culicidae). *Asian Pac. J. Trop. Dis.* 2, S399–S403.
- Karunamoorthi, K., Adane, M., Fentahun, W., 2009. Assessment of knowledge and usage custom of traditional insect/mosquito repellent plants in Addis Zemen Town, South Gonder, North Western Ethiopia. *J. Ethnopharmacol.* 121 (1), 49–53.
- Khan, S., Taning, C.N.T., Bonneure, E., et al., 2017. Insecticidal activity of plant-derived extracts against different economically important pest insects. *Phyto-parasitica* 45 (1), 113–124.

- Kumar, P., Mishra, S., Malik, A., et al., 2013. Housefly (*Musca domestica* L.) control potential of *Cymbopogon citratus* Stapf. (Poales: poaceae) essential oil and monoterpenes (citral and 1,8-cineole). *Parasitol. Res.* 112 (1), 69–76.
- Kweka, E.J., Masha, F., Lowassa, A., et al., 2008. Ethnobotanical study of some of mosquito repellent plants in north-eastern Tanzania. *Malar. J.* 7 (1), 152.
- Lavaud, F., Bouchet, F., Mertes, P.M., et al., 1999. Allergy to the bites of blood-sucking insects: clinical manifestations. *Allerg. Immunol. (Paris)* 31 (9), 311–316.
- Li, G., Zhu, D., Pandey, R.K., 2003. *Phytochemical and Biological Studies on Evodia Lepta*, Oriental Foods and Herbs. American Chemical Society, pp. 247–257.
- Luo, Z., Tang, S., Jiang, Z., et al., 2016. Conservation of terrestrial vertebrates in a global hotspot of Karst area in Southwestern China. *Sci. Rep.* 6 (1), 25717.
- Lü, J.H., He, Y.Q., 2010. Fumigant toxicity of *Ailanthus altissima* Swingle, *Atractylodes lancea* (Thunb.) DC. and *Elsholtzia stauntonii* Benth extracts on three major stored-grain insects. *Ind. Crop. Prod.* 32 (3), 681–683.
- Maharaj, R., Maharaj, V., Newmarch, M., et al., 2010. Evaluation of selected South African ethnomedicinal plants as mosquito repellents against the *Anopheles arabiensis* mosquito in a rodent model. *Malar. J.* 9 (1), 301.
- Mavundza, E.J., Maharaj, R., Finnie, J.F., et al., 2011. An ethnobotanical survey of mosquito repellent plants in uMkhanyakude district, KwaZulu-Natal province, South Africa. *J. Ethnopharmacol.* 137 (3), 1516–1520.
- Mdoe, F.P., Cheng, S.-S., Msangi, S., et al., 2014. Activity of *Cinnamomum osmophloeum* leaf essential oil against *Anopheles gambiae* s.s. *Parasites Vectors* 7 (1), 209.
- Mehmood, F., Shahzadi, P., 2014. Insect toxicity and repellent activity of phytochemicals from "flea killer, *Boenninghausenia albiflora*" against "black garden ant, *Iasius Niger*" of Pakistan. *J. Bioanal. Biomed.* 6 (1), 5.
- Minj, N., Calistus, J., Sri, S., 2017. Larvicidal and anti-feedant activity of *Phyllanthus emblica* and *Syzygium cumini* extracts on the diamondback moth: *Plutella xylostella*. *Int. J. Biol. Res.* 2, 97–100.
- Mobki, M., Safavi, S.A., Safaralizadeh, M.H., et al., 2014. Toxicity and repellency of leaf extracts of *Allium sativum* L.) extract grown in Iran against *Tribolium castaneum* (Herbst) larvae and adults. *Arch. Phytopathol. Plant Protect.* 47 (1), 59–68.
- Moreira, M.D., Picanço, M.C., Barbosa, L.C.d.A., et al., 2007. Plant compounds insecticide activity against Coleoptera pests of stored products. *Pesqui. Agropecu. Bras.* 42 (7), 909–915.
- Mukandiwa, L., Eloff, J.N., Naidoo, V., 2016. Repellent and mosquitocidal effects of leaf extracts of *Clausena sinata* against the *Aedes aegypti* mosquito (Diptera: Culicidae). *Environ. Sci. Pollut. Res.* 23 (11), 11257–11266.
- Murugan, K., Dinesh, D., Kumar, P.J., et al., 2015. *Datura metel*-synthesized silver nanoparticles magnify predation of dragonfly nymphs against the malaria vector *Anopheles stephensi*. *Parasitol. Res.* 114 (12), 4645–4654.
- Myers, N., Mittermeier, R.A., Mittermeier, C.G., et al., 2000. Biodiversity hotspots for conservation priorities. *Nature* 403 (6772), 853–858.
- Nil, T., Yadav, A., Deori, K., 2015. Anthelmintic effects of *Psidium guajava* and *Lasia spinosa* on *Hymenolepis diminuta* (Cestoda): a scanning electron microscopic study. *J. Adv. Microsc. Res.* 10, 20–23.
- Njan-Nloga, A., Saotoing, P., Tchouankeu, J., et al., 2007. Effect of essential oils of six local plants used insecticide on adults of *Anopheles gambiae*, Giles 1902. *J. Entomol.* 4 (6), 444–450.
- Nong, X., Fang, C.-L., Wang, J.-H., et al., 2012. Acaricidal activity of extract from *Eupatorium adenophorum* against the *Psoroptes cuniculi* and *Sarcoptes scabiei* in vitro. *Vet. Parasitol.* 187 (1), 345–349.
- Noosidom, A., Prabaripai, A., Chareonviriyaphap, T., et al., 2008. Excito-repellency properties of essential oils from *Melaleuca leucadendron* L., *Litsea cubeba* (Lour.) Persoon, and *Litsea salicifolia* (Nees) on *Aedes aegypti* (L.) mosquitoes. *J. Vector Ecol.* 33 (2), 305–313.
- Office of the Government of Xishuangbanna Dai Autonomous Prefecture, 2019. The Profile of Xishuangbanna Dai Autonomous Prefecture. https://www.xsbn.gov.cn/88.news.detail.dhtml?news_id=34206. (Accessed 21 October 2019).
- Ong, H.G., Kim, Y.-D., 2020. Medicinal plants for gastrointestinal diseases among the Kuki-Chin ethnolinguistic groups across Bangladesh, India, and Myanmar: a comparative and network analysis study. *J. Ethnopharmacol.* 251, 112415.
- Panneerselvam, C., Murugan, K., Kovendan, K., et al., 2012. Mosquito larvicidal, pupicidal, adulticidal, and repellent activity of *Artemisia nilagirica* (Family: Asteraceae) against *Anopheles stephensi* and *Aedes aegypti*. *Parasitol. Res.* 111 (6), 2241–2251.
- Park, I.-K., Kim, J., Lee, S.-G., et al., 2007. Nematicidal activity of plant essential oils and components from ajowan (*Trachyspermum ammi*), allspice (*Pimenta dioica*) and litsea (*Litsea cubeba*) essential oils against pine wood nematode (*Bursaphelenchus xylophilus*). *J. Nematol.* 39 (3), 275–279.
- Patil, C.D., Patil, S.V., Salunke, B.K., et al., 2011. Bioefficacy of *Plumbago zeylanica* (Plumbaginaceae) and *Cestrum nocturnum* (Solanaceae) plant extracts against *Aedes aegypti* (Diptera: culicidae) and nontarget fish *Poecilia reticulata*. *Parasitol. Res.* 108 (5), 1253–1263.
- Phasomkusolsil, S., Soonwera, M., 2011. Efficacy of herbal essential oils as insecticide against *Aedes aegypti* (Linn.), *Culex quinquefasciatus* (say) and *Anopheles dirus* (peyton and harrison). *SE. Asian J. Trop. Med. Public Health* 42 (5), 1083–1092.
- Pialoux, G., Gaüzère, B.-A., Jauréguiberry, S., et al., 2007. Chikungunya, an epidemic arbovirolos. *Lancet Infect. Dis.* 7 (5), 319–327.
- Roberto, R., Guido, S., Giancarlo, M., 2001. Could malaria reappear in Italy? *Emerg. Inf. Disp.* 7 (6), 915.
- Seo, S.-M., Park, I.-K., 2012. Larvicidal activity of medicinal plant extracts and lignan identified in *Phryma leptostachya* var. *asiatica* roots against housefly (*Musca domestica* L.). *Parasitol. Res.* 110 (5), 1849–1853.
- Sivasankari, B., Anandharaj, M., Gunasekaran, P., 2014. An ethnobotanical study of indigenous knowledge on medicinal plants used by the village peoples of Thoppampatti, Dindigul district, Tamilnadu, India. *J. Ethnopharmacol.* 153 (2), 408–423.
- Solomon, B., Gebre-Mariam, T., Asres, K., 2012. Mosquito repellent actions of the essential oils of *Cymbopogon citratus*, *Cymbopogon nardus* and *Eucalyptus citriodora*: evaluation and formulation studies. *J. Essent. Oil Bear. Pl.* 15 (5), 766–773.
- Song, E., 1985. *Minority Religion of China*. Yunnan People's Publishing House, Kunming.
- Steppuhn, A., Gase, K., Krock, B., et al., 2004. Nicotine's defensive function in nature. *PLoS Biol.* 2, 1074–1080.
- Tandon, S., Mittal, A.K., 2018. Insecticidal and growth inhibitory activity of essential oils of *Boenninghausenia albiflora* and *Teucrium quadrifarium* against *Spilargia obliqua*. *Biochem. Systemat. Ecol.* 81, 70–73.
- Tawatsin, A., Thavara, U., Chansang, U., et al., 2006. Field evaluation of DEET, REPEL CARE®, and three plant-based essential oil repellents against mosquitoes, black flies (Diptera: Simuliidae), and land leeches (Arhynchobdellida: haemadipsidae) in Thailand. *J. Am. Mosq. Contr. Assoc.* 22 (2), 306–313.
- Trongtokit, Y., Rongsriyam, Y., Komalamisra, N., et al., 2005. Comparative repellency of 38 essential oils against mosquito bites. *Phytother. Res.* 19 (4), 303–309.
- Volpato, A., Baretta, D., Zortéa, T., et al., 2016. Larvicidal and insecticidal effect of *Cinnamomum zeylanicum* oil (pure and nanostructured) against mealworm (*Alphitobius diaperinus*) and its possible environmental effects. *J. Asia Pac. Entomol.* 19 (4), 1159–1165.
- Wang, L., Luo, Y., Lu, Y., 2012. Insecticidal activities of the extracts from 57 southern Chinese herbs against *Aleurodicus dispersus*. *Plant Prot.* 38 (1), 108–111.
- Whalon, M., Mota-Sanchez, D., Hollingworth, R., 2008. *Analysis of Global Pesticide Resistance in Arthropods*. CAB International, Wallingford.
- WHO, 2017. *Global Vector Control Response 2017–2030*. Geneva.
- WHO, 2020. *Vector-borne disease*. <https://www.who.int/en/news-room/fact-sheets/detail/vector-borne-diseases>. (Accessed 1 April 2020).
- Yang, C.L., Jiang, S.H., Xu, H.H., 2006. Research progresses in plant-originated repellents. *Plant Prot.* 6, 4–9.
- Yang, K., Wang, C.F., You, C.X., et al., 2014. Bioactivity of essential oil of *Litsea cubeba* from China and its main compounds against two stored product insects. *J. Asia Pac. Entomol.* 17 (3), 459–466.
- Zhang, J., Song, Q.H., Zhang, Y.P., et al., 2018. Characteristics of fog in Xishuangbanna tropical rainforest and Ailaoshan subtropical evergreen broad-leaved forest. *Acta Ecol. Sin.* 38 (24), 8758–8765.
- Zhao, J., Zhang, Y., Song, F., et al., 2013. Phenological response of tropical plants to regional climate change in Xishuangbanna, south-western China. *J. Trop. Ecol.* 29 (2), 161–172.
- Zhu, H., 2013. The floras of southern and tropical southeastern Yunnan have been shaped by divergent geological histories. *PLoS One* 8 (5), e64213.
- Zhu, H., Wang, H., Li, B., et al., 2015. Studies on the forest vegetation of Xishuangbanna. *Plant Sci. J.* 33 (5), 641–726.